

# WHAT'S HAPPENING

AT ADVANCE HOUSING

## FAREWELL TO THE CEO

(AND 'MYSTY' THE OFFICE DOG)

After ten and a half years as CEO of Advance Housing Limited (previously Great Southern Community Housing Association), Kaz Sternberg recently tendered her resignation, effective 28<sup>th</sup> June 2019.

During her time with AHL, Kaz played an important role in the development, growth and success of the organisation, with the number of properties increasing from around 100 to 400.

Under Kaz's leadership Advance Housing has expanded its operations to include the development of student accommodation with a 20 bed facility on Stirling Terrace completed in 2018, and a 40 bed facility on Serpentine Road currently under construction.

We wish Kaz all the very best in her future endeavours.

The Board have appointed our current Finance Manager, Karen Marwick to the position of Acting CEO.



### Opening hours

Monday - Friday

9.00am - 3.00pm

8.00am - 9.00am and 3.00pm - 4.30pm

Strictly by appointment only

### Our contact details

Phone: (08) 9845 9697

Fax: (08) 9841 7135

Email:  
[admin@advancehousing.com.au](mailto:admin@advancehousing.com.au)

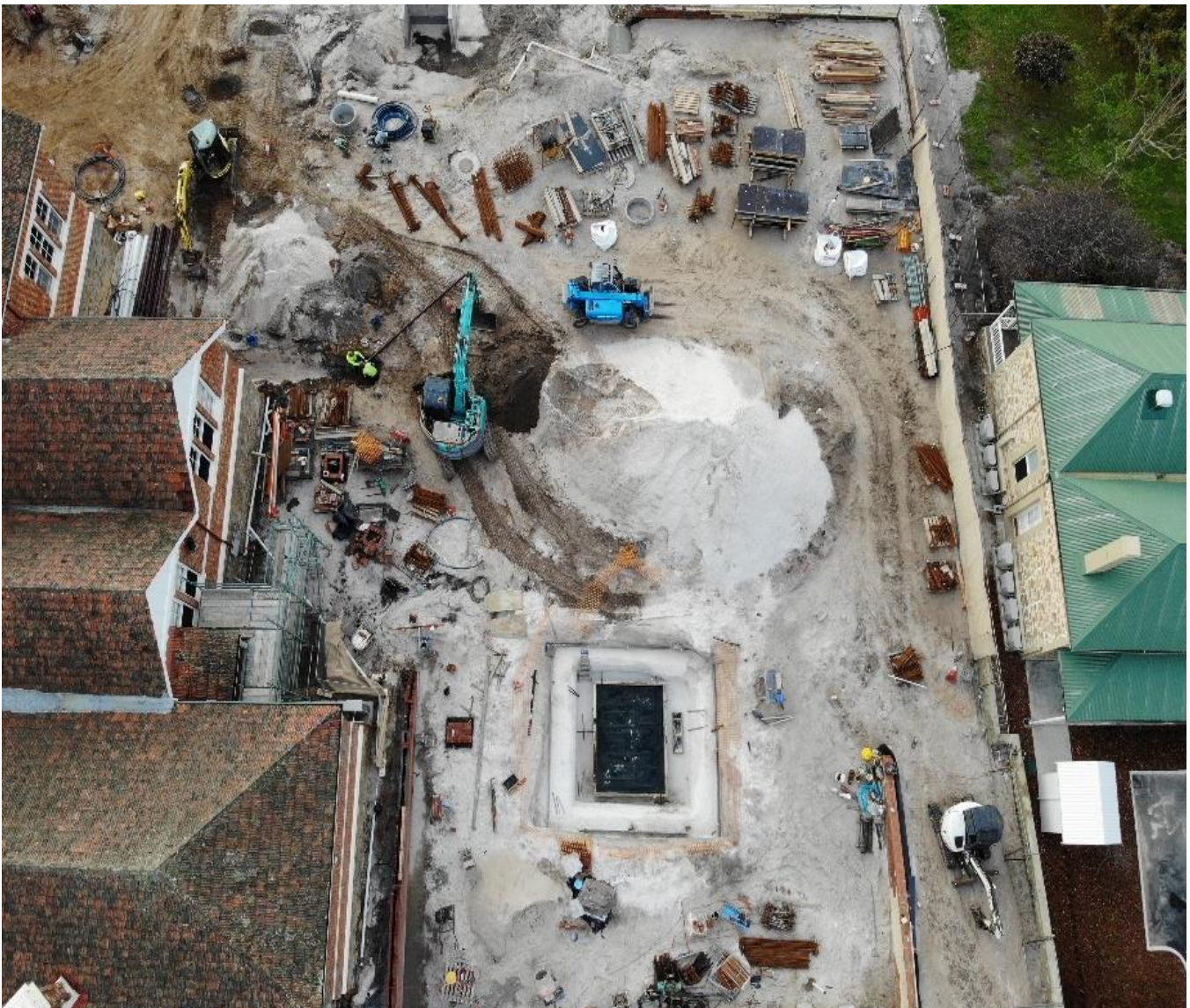
# STUDENT HOUSING DEVELOPMENT

The student accommodation site directly behind our office has construction well under way and we are all waiting in anticipation to see the finished project.

We do ask that you bear with us during this sometimes chaotic and noisy time.

If you have an appointment at the office we recommend allowing a few extra minutes to find a parking space.

*Pictured below is an aerial view of the site*



# APPLE SLICE

(Serves 8)

## Ingredients

340g packet vanilla cake mix  
 2/3 cup melted butter  
 1 ½ cups stewed apples  
 200 grams sour cream



## Instructions

- Preheat oven to 180C. Line a 30 x 20 baking dish with baking paper.
- In a bowl, combine the cake mix and melted butter to form a dough. Spread the dough evenly in the baking dish and bake for 15 minutes.
- Remove from oven and evenly layer the apple and top with the sour cream.
- Return to the oven for another 15 minutes or until sour cream is set.

## Notes

You may like to sprinkle ground cinnamon on the sour cream before baking.

Serve hot or cold

Store in the fridge

## Mindfulness, Meditation and Movement



*Advance Housing are currently running a four week pilot program. The classes have been well received by all participants.*

*You are invited to register your interest for future classes by phoning 9845 9697.*

## ELECTRICAL SAFETY DEVICE TESTING

Our properties are now due for Electrical Safety Device testing which will be conducted over the coming months by our qualified electricians.

You will receive a call from the contractor to arrange a suitable time for testing to be conducted.

Please ensure that you are home (or have given permission for the contractor to use the office set of keys) for the appointment to go ahead in accordance with these arrangements. If for any reason you need to change the appointment, please notify our office before the day of the appointment.

## Q & A

### ***Why do I have to provide proof of income for all household members if I am already paying the maximum amount of rent?***

Advance Housing must meet contractual obligations with the Department of Communities - Housing which includes ensuring that all tenants meet eligibility criteria. To prove eligibility we do require all proof of income when conducting a rent review. We understand that this can be an inconvenience, however, it is a condition of you being able to live in the property.

### ***How much notice do I have to give if I move out?***

If you have a periodic tenancy agreement then you are required to give 21 days written notice of your intention to vacate. For fixed term leases, your contract is for the term stated on the agreement and you must speak to your Property Manager if you need to vacate before the end date of the contract.

### ***If I have paid a pet bond do I still need to seek permission to acquire more pets?***

Yes, **all** pets must be approved prior to having them at the property. You also must ensure that all pets comply with local council regulations.

### ***If I no longer have my pet, can I get my pet bond back?***

No, the pet bond is held until the end of the tenancy for the purposes of having the property professionally fumigated. Any unused amount will be refunded to you after the fumigation. You can choose to employ your own pest control contractor after you vacate and then provide the receipt with your set of keys on the vacate date. In this instance, the pet bond will be returned to you.

### ***I am going to be away from the property for a period of time. Do I need to notify my Property Manager?***

It is not a requirement that you notify your Property Manager if you are only away for a short time, although it is always a good idea to let us know and provide any different contact numbers for you. It is your responsibility to ensure that the property is secure and your mailbox is being emptied regularly in your absence. Should you be away for more than a few weeks, you are required to let your Property Manager know as this may affect insurance cover.

